

Kit contains 8 straps. Use 3 straps per side when mounting an HB 2X0 and 4 straps per side when mounting an HB 3X0 or longer Hydra Bed.

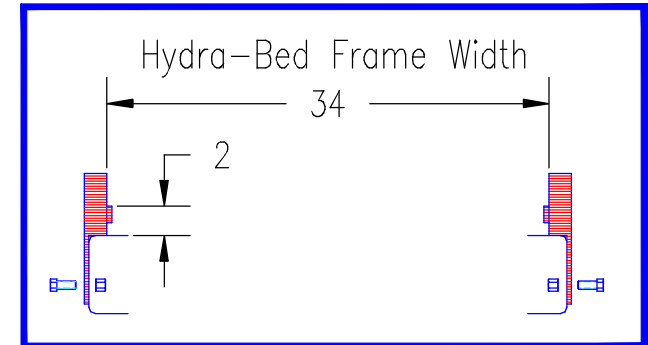
05/25/05

GENERAL INSTRUCTIONS AND CAUTIONS

Note: When welding, attach welder ground only to Hydra-Bed, not to truck frame. Use low-hydrogen rod or wire electrode. NEVER weld to the frame of the truck. Correct installation of the Level-Lok system assures Front to Rear and Side to Side leveling as well as Left to Right centering of the Hydra-Bed. Never obstruct factory overload spring mounting locations.

When drilling truck frame, do not damage any part of the braking, fuel or electrical systems.

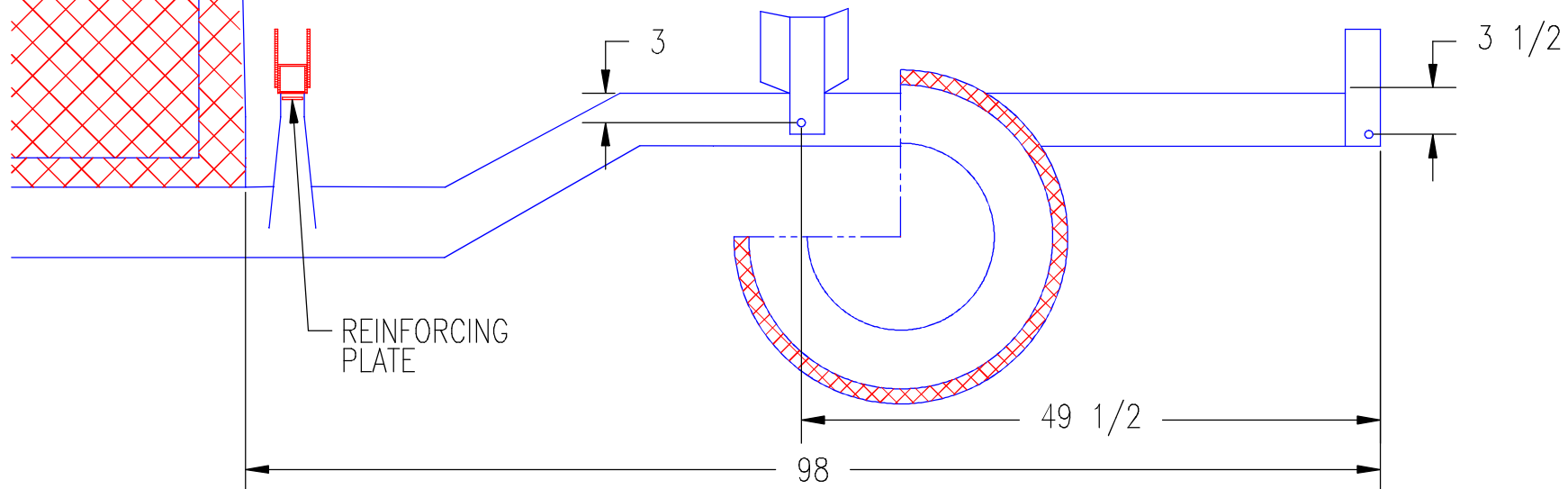
VIEW OF REAR LEVEL-LOKS ON TRUCK FRAME



Bolt 2 1/2x2 1/2x54" tube to factory frame risers placing reinforcing plates under risers. Center Hydra-Bed 10" from each end of tube. Weld Hydra-Bed frame to tube risers. Hydra-Bed frame will be resting on tube and between risers.

Attach flat 3/8x3x10 strap to oblong hole in frame approx 49 1/2" from rear of frame. Weld 1/4x4x6 plates between strap and Hydra-Bed frame.

Locate rear CLL-2 over 1/2" pilot hole approx 1 1/4" from rear of frame. Drill hole to 5/8". Bolt CLL-2 in place.



CLL-2

1988-2000 Chevy/GMC
56" Cab to Axle Single/Dual Wheel

05/30/01